



STEEL FIRE-RATED DOORS HEN 120 / HCT 120

In accordance with BS EN 1634-1

Inherited product quality for your better safeguard

Hörmann has an over 80-year history of producing fire-rated doors since it first came out of Hörmann Germany in the 1940s. Hörmann China has produced fire-rated doors with German-imported production lines and technology since 1998, strictly adhering to ISO 9001:2015 Quality Management System and ISO 14001:2015 Environmental Management System. The new developments are constantly tested for the required fire resistance through authorized test centres for official approvals, providing you full confidence in safety assurance.





**Authorized
certification**



**Stable
coupling structure**



**All-around
smoke protection**



**Diversified
surfaces**



**Durable
hardware**

Steel fire-rated doors HEN 120 and HCT 120 are tested and certified in accordance with BS EN 1634-1, identical to European standard EN 1634-1. High-precision automatic equipment controlled by SAP management system also ensures the premium quality and consistent performance of Hörmann products. We produce as certified.

In addition to being filled with high-quality fireproof boards, the improved frame structure allows for a wider coupling overlap between the door leaf and frame, thus providing greater structural strength and a higher level of fire resistance and smoke tightness.

Hörmann doors also offer an artistic appearance. Our doors are optionally available with a high-quality powder coating in a wide spectrum of RAL colors, Decograin surfaces, and Silkgrain surfaces to suit the diverse decorative tastes of buildings.





Steel fire-rated door HEN 120

For your fire protection requirements



62 mm door leaf thickness



Integrity 120 min



Insulation 60 min



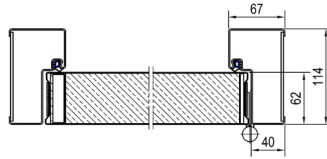
Flush design for single-leaf door



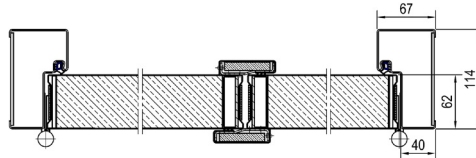
Meeting stile for double-leaf door

Cross section view

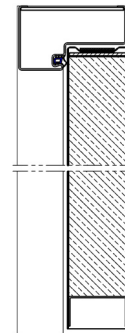
Single-leaf door HEN 120 - 1



Double-leaf door HEN 120 - 2



Vertical section view



Main configuration

Integrity rating	120 min
Insulation rating	60 min
Leaf thickness	62 mm
Leaf steel sheet thickness	0.8 mm
Frame steel sheet thickness	1.5 mm
Frame depth	114 mm
Infill	Fireproof board
Lock	Fireproof lock HML03
Handle set	SUS 304 lever / lever handle set H-110 in short plate
Hinges	SUS 304 fireproof hinge
Frame connection	90°

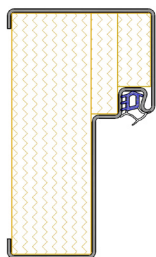
Glazing

Glass type	El nano-silicon tempered fireproof glass
Glass thickness	30 mm
Rectangle glazing	Width ≤ 220 mm; Height ≤ 1000 mm
Round glazing	Dia. Ø = 300 mm

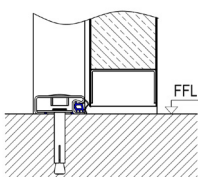
Structural opening size limitation

	Max. width	Max. height
Single-leaf door	1300 mm	2500 mm
Double-leaf door	2500 mm	2500 mm

Special solution ideal for repair and refurbishment projects



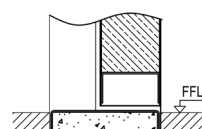
Frame infilled with mineral wool
Free of on-site cement grouting



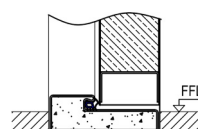
Retrofit bottom frame
Directly installed on the finish floor

Bottom sealing:

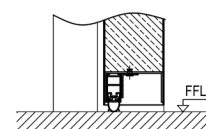
There are three bottom sealing methods to choose from in order to ensure that the gap between the door and floor is sealed. The threshold is available in SUS or galvanized steel.



Flat threshold



Threshold with seal



Retractable bottom seal

Steel fire-rated door HEN 120

Quality comes from details



High Class Sealing

Dedicated, composite fire retardant expansion strips **1** on three sides of every door leaf automatically and rapidly seal any gaps in case of fire, effectively stopping the flames and smoke from spreading.

Additionally, double-leaf doors are designed with meeting stiles **1** on the hinge side and the opposite hinge side as standard. This optimizes and secures the door stability in case of fire.

Composite sealing strips embedded in a specially manufactured frame groove **2** have a unique double functional design. A hollow chamber and a thermal-expansion part. This combination not only brings better acoustic and thermal insulation but also quieter daily operation as well as securing optimal sealing in case of fire.

Fire Proof Glazing **3**

Hoermann's specially developed five-layered fire proof glazing consists of composite tempered glass and nanoscale inorganic silicon refractory. It is characterized by excellent visibility, durability and most importantly secure, reliable fire proofing. The special glazing reduces the risk of blistering and discoloration after long-term use.

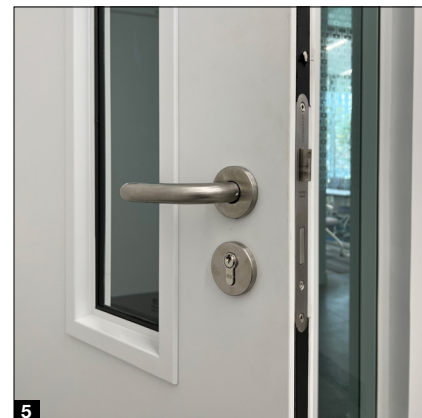
In usual it comes in a powder coated high class finishing on galvanized steel, while galvanized steel and SUS framing finishes as well as round designs are optionally available.



Stainless Steel Handle Set

Handles are tested for 200,000 opening and closing cycles according to EN 1906 to guarantee long service life and reliable, safe usage.

Fire-rated doors come with a SUS304 lever handle set H-110 in short plate **4** as standard. Lever handle sets in rose **5** and lever / knob handle sets are also optionally available.



Anti-panic System

Emergency anti-panic system can be chosen for escape and rescue routes. Our system is compliant and tested to European standards EN 1125 (panic lock with horizontal bar **6**) and EN 179 (emergency lock with handles).



Maintenance-friendly Hinges **7**

Fire-rated doors are equipped with reinforced SUS hinges with maintenance-free ball-bearing. It meets the highest level (Grade 14) of EN 1935, with a service life of 200,000 cycles and a load-bearing capacity of 160 kg.

Door Closer and Selector

Safe and correct closing of fire-rated doors after passing is an important prerequisite of fire protection during critical moments. The self-closing function is realized by a door closer with arm **8** or a door closer with sliding rail **9**. The door selector **10** ensures the correct locking sequence of double-leaf doors.





SEPU 234037 1 45S4

Steel fire-rated door HCT 120

Specially designed for water-ingress protection



62 mm door leaf thickness



Integrity 120 min



Insulation 60 min



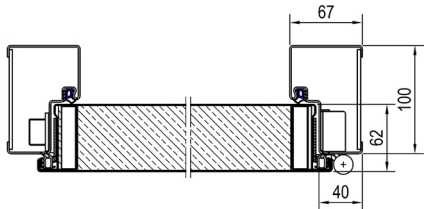
**IP X5
IEC 60529
Against water jet**



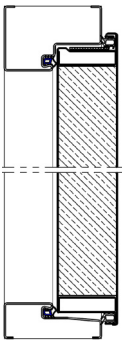
**Rebated design
for water tightness**

Cross section view

Single-leaf door HCT 120 - 1



Vertical section view



Main configuration

Integrity rating	120 min
Insulation rating	60 min
IP rating	IP X5
Leaf thickness	62 mm
Leaf steel sheet thickness	0.8 mm
Frame steel sheet thickness	1.5 mm
Frame depth	100 mm
Infill	Fireproof board
Lock	Fireproof lock HML03
Handle set	SUS 304 lever / lever handle set H-110 in short plate
Hinges	Galvanized 3D adjustable hinges powder coated
Frame connection	45°

Glazing

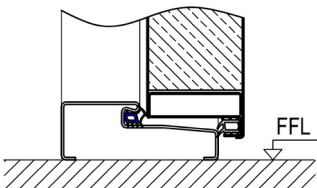
Glass type	El nano-silicon tempered fireproof glass
Glass thickness	30 mm
Round glazing	Dia. Ø = 300 mm

Structural opening size limitation

	Max. width	Max. height
Single-leaf door	1110 mm	2500 mm

Bottom sealing:

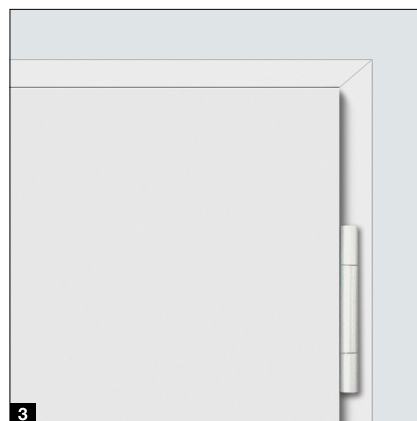
Standard for special slope-designed threshold for better sealing all around and good water tightness performance, threshold height available for 22 mm and 40 mm, material available for stainless steel and galvanized steel.



Sloping threshold with seal

Steel fire-rated door HCT 120

Dedicated functional design for water tightness



Tailored Engineering for Tightness

The rebated door leaf design **1** is especially suitable for functional areas required for tightness. It is also equipped with special sealing strips embedded in the frame groove. This special design closes the gap between the door leaf and frame, allowing for optimal performance in outdoor applications. Like this dust, water or other unwanted substances are kept outside.

Ensuring an optimal, long lasting sealed environment resisting adverse external influences, the HCT 120 is equipped with a sloped SUS bottom threshold **2**. This feature prevents the inflow of liquids like water and dust. Simultaneously, it ensures the outflow of water during heavy rain or water spraying.

Heavy Duty Hinges **3**

Tested and certified fire proofed, galvanized steel hinges with powder coated finishing ensure corrosion and rust protection. The hinge system is 3-dimension adjustable and effective at fine door adjustment, allowing you to balance out minor fitting tolerances.

Fire Proof Glazing

Round glazing in SUS / powder-coated steel frame **4** is available as an option. Benefiting from the integrally molded glazing frame and the double-sealed connection between the glazing and door leaf, the overall sealing of the door remains excellent while easy maintenance is enabled.

Anti-panic System **5**

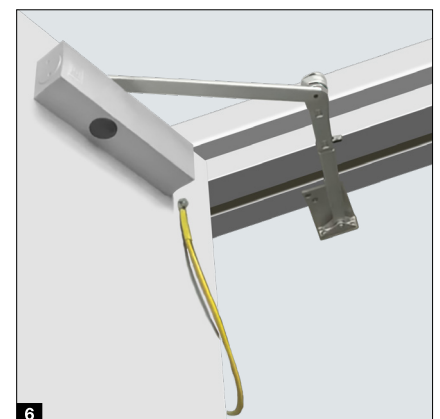
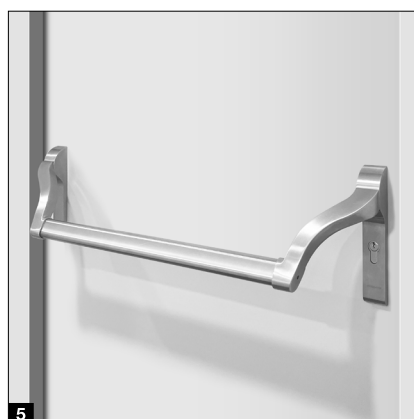
The door can be equipped with an emergency anti-panic system in accordance with EN 1125 and EN 179, ensuring a clear, safe and quick escape route for individuals in panic situations.

Door Closer

An arm or sliding rail door closer can be mounted on the opposite hinge side (indoor side) **6** for a trim and tidy appearance outside. The self-closing function reassures fire protection and a stable indoor environment for every entry and exit.

Earthing Nut **6**

For applications with increased electrical requirements, an earthing nut for protective grounding can be chosen to keep equipment and individuals safe at all time.



Diverse surfaces

Full range colors and surfaces for your choice

Powder Coating Surface

The smooth appearance of coating provided by the advanced powder coating line gives the steel doors a superb appearance. We offer a wide spectrum of nearly 200 colors to bring different atmospheres. 58 classic colors are specially recommended to help match various design styles more easily and quickly.



Decograin Surface - Range 1 & Range 2

Our fine Decograin film is tightly attached to the galvanized steel sheet of the door leaf through an advanced, high tech heat-pressing procedure. The timber designs not only offer a natural-looking, eye pleasing appearance for residential and public use but also are easy to maintain. Meanwhile, the tested surface achieves excellent general durability and UV resistance.



Decograin Surface - Range 3

Various Decograin surfaces with flexible textures and colors, present natural 3D wood patterns and create a cozy atmosphere. Certified by German SKZ, it guarantees excellent outdoor weather resistance, color fastness, and ease of cleaning and maintenance.



Silkgrain Surface - Range 1

Silkgrain is a new steel sheet surface achieved by advanced 3D print pre-coating technology (PPM), overprinting layer by layer, presenting natural and realistic textures and 3D sense of touch. The surfaces comply with the SVHC testing requirements of REACH regulation, and obtain the environmental certification of RoHS.

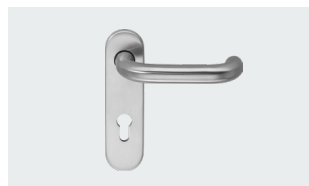


Fireproof hardware

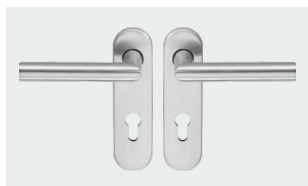
Reliable hardware is the guarantee of life safety

SUS handle set and knob

Hundreds of thousands opening and closing cycles for safe and long service life guarantee



Lever / lever handle set
H-110 in short plate / rose
D-110 in short plate / rose



Lever / lever handle set
D-310 in short plate / rose



Lever / lever handle set
D-410 in rose



Lever / knob handle set
D-110 / K-130 in short plate / rose
D-310 / K-130 in short plate / rose
D-410 / K-130 in rose

Door closer

Safe and correct door closing after passing is an important prerequisite of fire protection during critical moments



Door closer with arm



Door closer with sliding rail

Overhead door closer	HDC 10	HDC 15	HDC 20	HDC 25	HDC 35	HDC 50
Force adjustable (according to EN 1154)	3/4	2/4/5	1-6	5-7	1-4	2-6
Door closer with arm	●	●	●	●		
Door closer with sliding rail					●	●
Fitting on opposite hinge side	○	○	○	○	○	○
Adjustable back check			●	●		●
Adjustable latching action	●	●	●	●	●	●
Adjustable closing speed	●	●	●	●	●	●
Mechanical hold-open device (Not permitted for fire protection)	○	○	○	○	○	○
Max. opening angle - hinge side	180°	180°	180°	180°	180°	180°
Max. opening angle - opposite hinge side	100°	180°	180°	180°	110°	110°

● = Standard ○ = Optional

Fireproof glazing

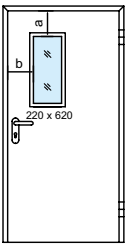


Fig. 1

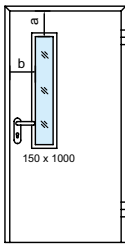


Fig. 2

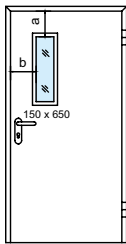
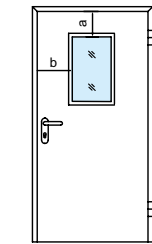
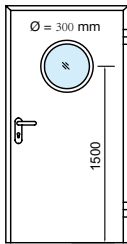


Fig. 3



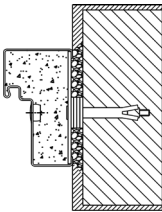
Glazing to choose



Round glazing

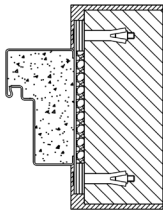
Glazing size parameters	Height of door ≤ 2100 mm	Height of door > 2100 mm
a	= 200 mm	= H - 1900 mm
b	≥ 195 mm	≥ 195 mm

Frame fitting methods



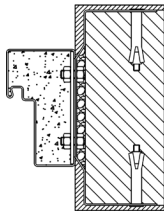
Type A

Central hole in frame



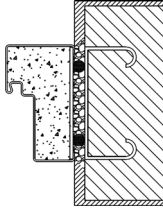
Type B

Tie plate external to frame



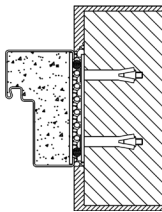
Type C

Double hole internal tie plate



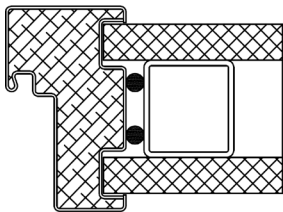
Type D1

Weld on anchor plate



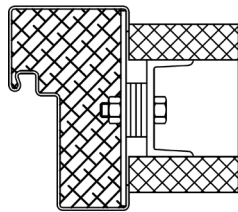
Type D2

Weld with plug/screw fitting



Type E

Installation onto the gypsum board of steel grid

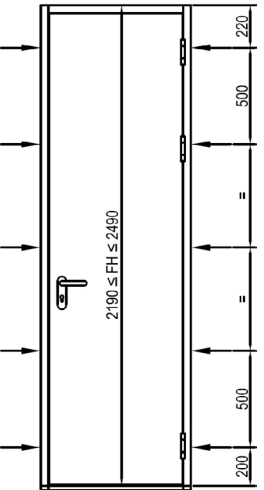
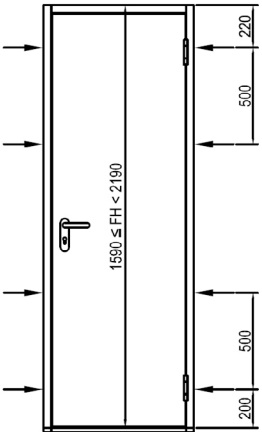
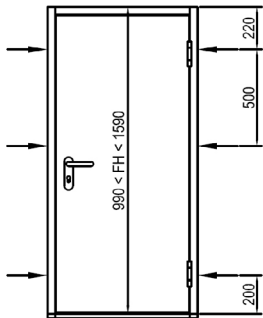
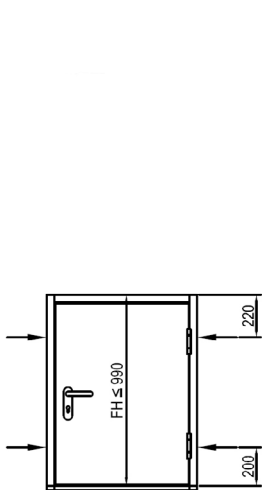


Type F

Installation onto the gypsum board of steel grid

Easy and quick installation
made by Hörmann

Spacing of anchors



Everything from a single source for public and commercial construction

Our large product portfolio could offer a right solution for your requirements. Our products could also be optimally adjusted and combined to work together, ensuring high functional safety. This makes us a strong, future-oriented partner for public and commercial construction projects.

**FIRE-RATED DOORS. INTERIOR DOORS. MULTI-PURPOSE DOORS. SLIDING DOORS.
TUBULAR DOORS AND PARTITION WALLS. INDUSTRIAL DOORS. LOADING TECHNOLOGY.**



Some of the products shown are equipped with special equipment and do not always correspond to the standard versions. The surface finishes and colours shown are subject to the limitations of the printing process and cannot be regarded as binding. All rights reserved. No part may be reproduced without our prior permission. Subject to changes.